

ROTO-JET PUMP

High Pressure Pitot Tube Pumps

Excellent
Power & Industrial
Solutions



Model RO D-850®

High Pressure Single-Stage, Centrifugal Pump With Advanced Pitot Tube Technology

Advanced Design

- High pressure without high speed
- Flexible - performance can be adjusted by changing the pitot tube
- Simple - only two basic working parts

Dependable performance

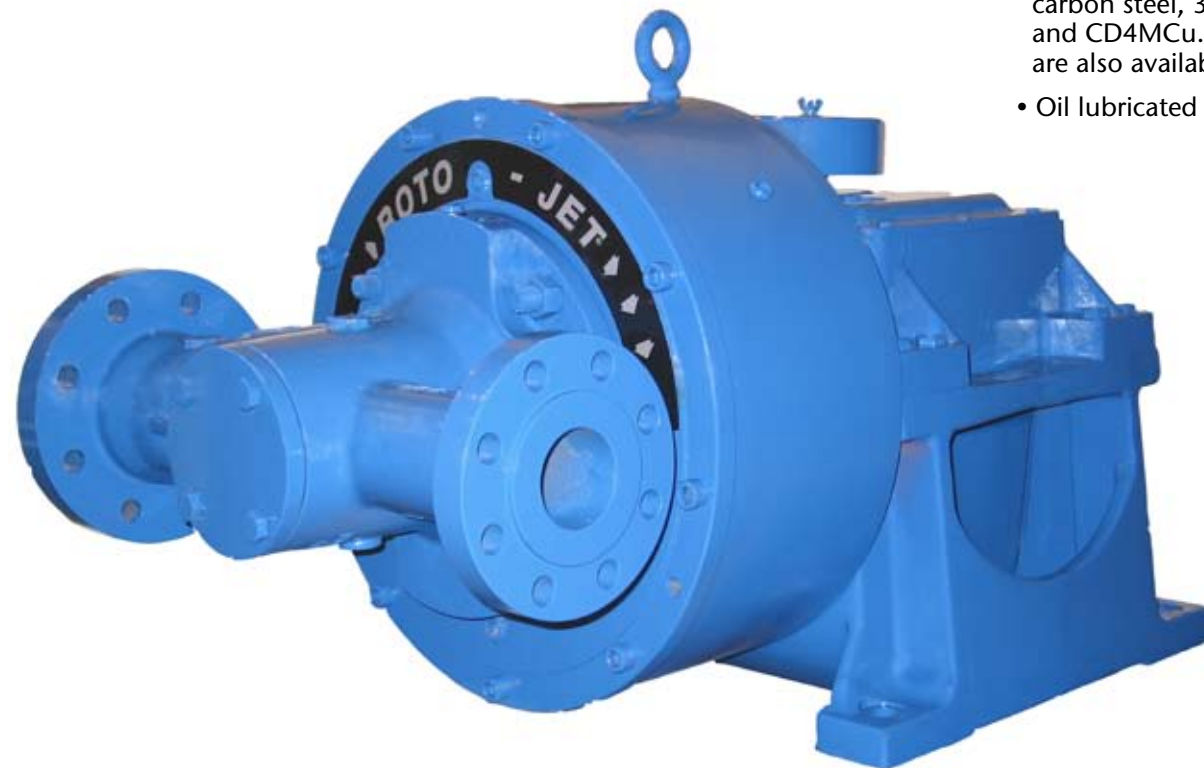
- Hydraulically stable along the entire performance curve and beyond BEP
- Low minimum flow requirement
- Rugged design - most reliable high pressure pump in the marketplace

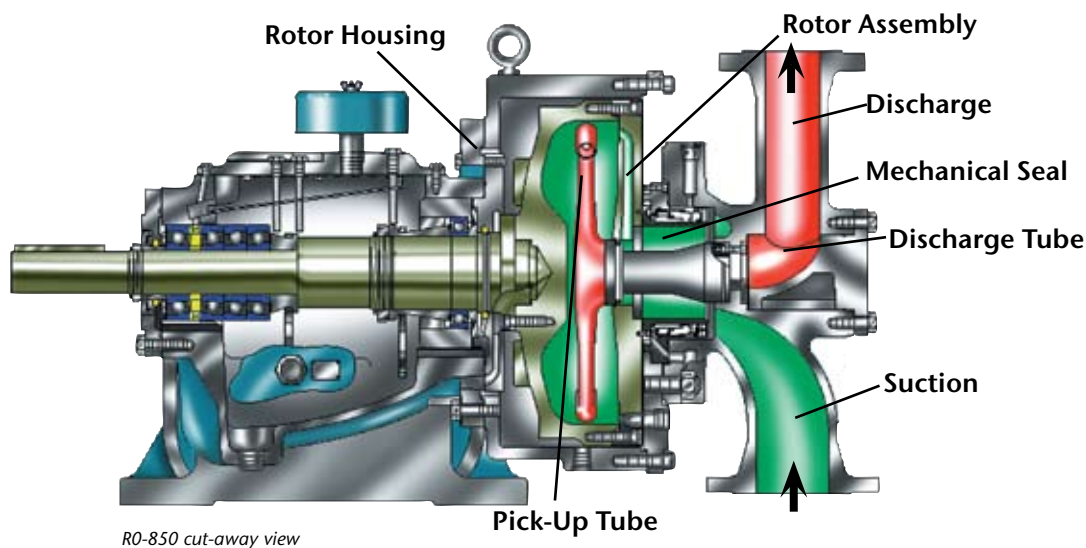
Enhanced Reliability

- Smooth, pulsation-free flow
- Low pressure mechanical seal is easily maintained
- Isolated bearing pedestal to minimize risk of bearing contamination

RO D850® Pump Features

- API design available
- Single or double mechanical seal
- Flanged connections
- Materials of construction: ductile iron, carbon steel, 316 stainless steel, CA6NM, and CD4MCu. Super duplex and Hastelloy are also available
- Oil lubricated bearings

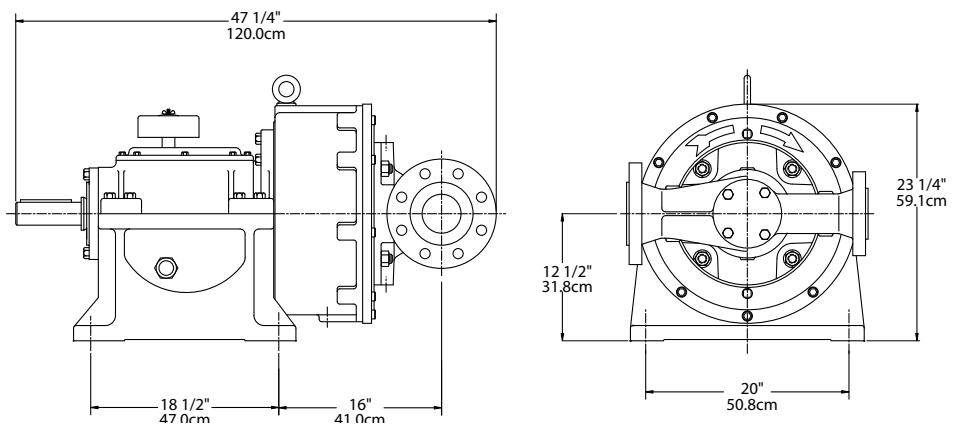




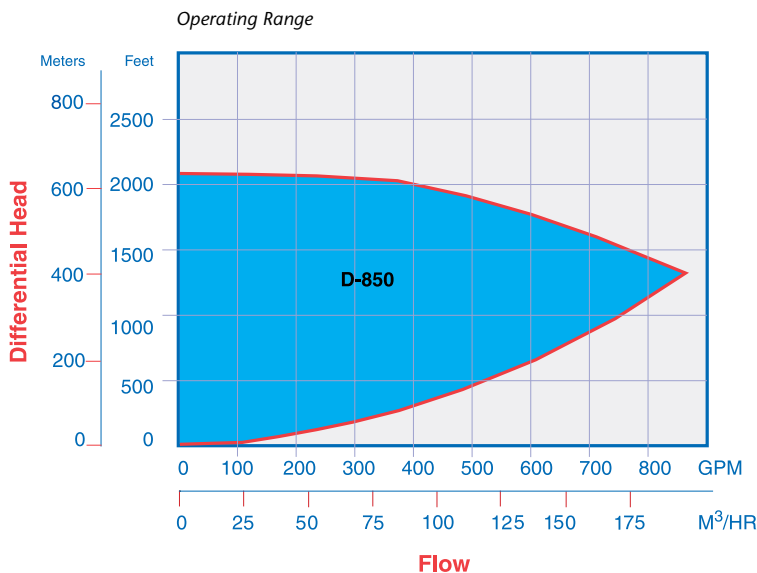
R0-850 cut-away view

Typical Roto-Jet Model RO-D850® Applications

- Food and Beverage cleaning systems
- Reverse osmosis systems
- Automotive gun drilling coolant
- Spraying/washing systems
- High pressure paper shower
- Circuit board wash systems
- Water/process injection systems
- Seal flushing systems
- Boiler feed/cleaning systems
- And many, many more...



Note: Dimensions are for general reference only and will vary with actual model selected.



Specifications RO D-850®		
Maximum Temperature (with flush)	250° F	121° C
Maximum Suction Pressure	550° F	288° C
Maximum Head	200 PSI	14 BAR
Maximum Speed	2100 Ft.	640 m
Maximum Flow	4380 RPM	4380 RPM
Maximum Horsepower	750 GPM	170 m³/hr
Weight	600 HP	450 KW
	1300 lbs.	590 kg
Materials of Construction		
Rotor*	Steel Carbon Steel	Stainless Steel 316 St. Steel
Rotor Cover*	Carbon Steel	316 St. Steel
Manifold	Carbon Steel	316 St. Steel
Endbell	Carbon Steel	Carbon Steel
Pick-up Tube**	17-4 PH	17-4 PH
Shaft	AISI 4140	AISI 4140

*Also available in Ductile Iron, CA6NM, CD4MCU and Hastelloy C

**Also available in 718 Inconel

Weir Specialty Pumps

440 W. 800 South
P.O. Box 209 (84110-0209)
Salt Lake City, UT 84101
USA
Tel: 1 801 359 8731
Fax: 1 801 530 7531
email: info@weirsp.com
www.weirsp.com

© 2009 Weir Specialty Pumps. All Rights reserved. Bulletin RJ-RO-D850

Excellent
Power & Industrial
Solutions

